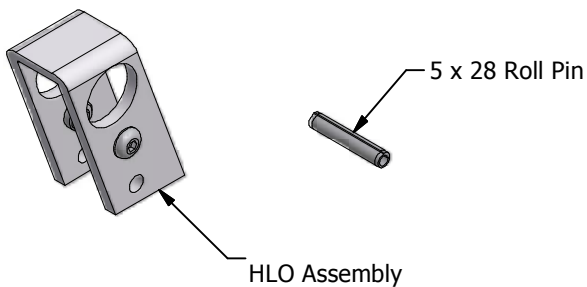


RETRO FITTING OF HIGH LEVEL OPERATOR TO FOLDING OPENERS

The High Level operator (HLO) is suitable for folding openers that are required to be operated at high level (can't be operated by hand from floor level). The HLO is not suitable for use with the 110, heavy duty or FoPlus types of folding openers. The HLO can be purchased for retro-fit purposes using the part number KP1067. It is particularly suited for use on the extended folding openers, this allows good levels of ventilation to be achieved whilst also enabling the window to be easily and quickly closed after use.

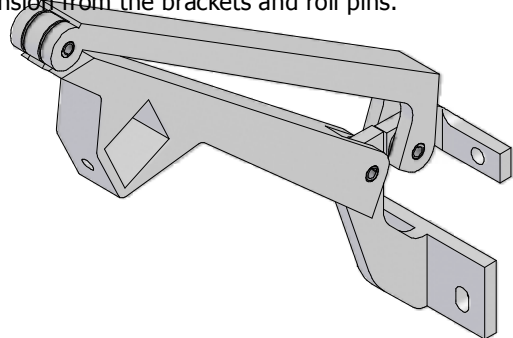
We recommend removal of the folding opener from the window if possible to enable fitment of the HLO in a workshop environment however, it is possible for the HLO assembly to be fitted to the folding opener without removal from the window. A risk assessment should always be performed by a "Competent Person" to ensure safe working practices are used before commencement of fitting.

Before fitting, ensure that the kit contains both the HLO assembly and the extended roll pin shown.



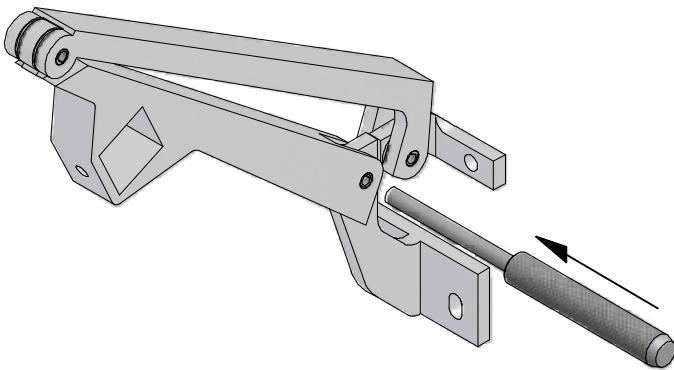
Step 1 :

Release the folding opener to the position shown to remove the tension from the brackets and roll pins.



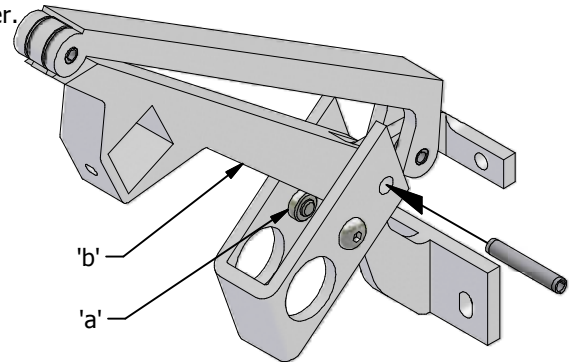
Step 2 :

Using a suitable drive punch or press, remove the roll pin from the assembly as shown.



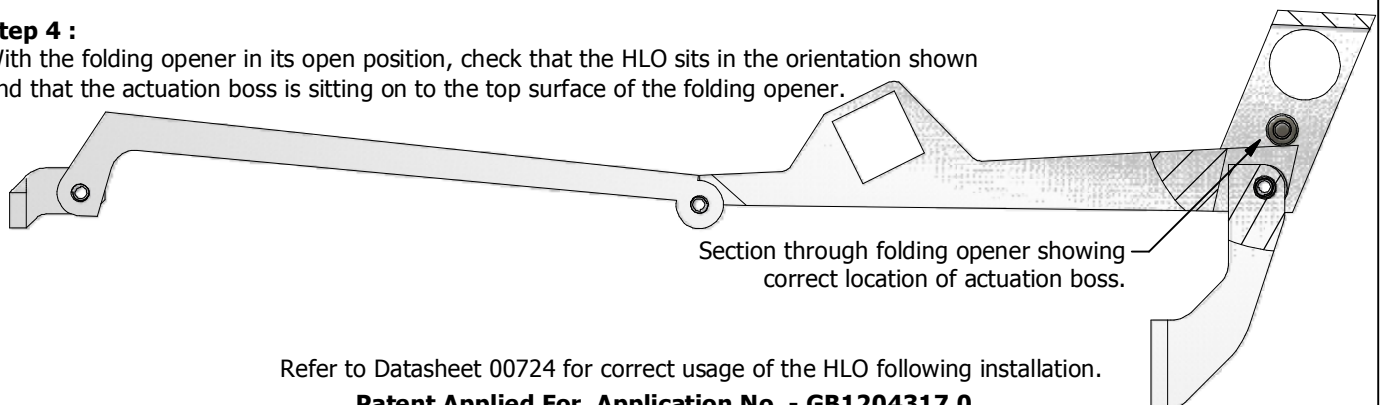
Step 3 :

Place the HLO assembly over the folding opener ensuring that actuation boss 'a' sits on top of surface 'b'. Using a suitable drive punch or press, fit the 5 x 28 roll pin supplied in the kit through the hole as shown to retain the HLO assembly to the folding opener.



Step 4 :

With the folding opener in its open position, check that the HLO sits in the orientation shown and that the actuation boss is sitting on to the top surface of the folding opener.



Refer to Datasheet 00724 for correct usage of the HLO following installation.

Patent Applied For. Application No. - GB1204317.0.

All of the information shown on this data sheet was correct at the time of issue. All information however is subject to change and therefore it is advisable to check to ensure that you have the latest issue level.